

**SECTION A (25 MARKS)**  
**ANSWER ALL QUESTIONS**

**Full  
Mark**

**Question 1**

**[10]**

For each question, there are four alternatives A, B, C and D. Choose the correct alternative and circle it. Do not circle more than ONE alternative. If there are more than one circled, NO score will be awarded.

**Marking Scheme**

<b>Criteria</b>	<b>Marks</b>
<b>Circles the correct option</b>	<b>1</b>
<b>Tick mark for correct option</b>	<b>1</b>
<b>Circles/Tick more than ONE alternative</b>	<b>0</b>
<b>Circles none of the alternatives</b>	<b>0</b>

i. When does Bhutan experience winter solstice?

**[1]**

A 21<sup>st</sup> June

B 21<sup>st</sup> March

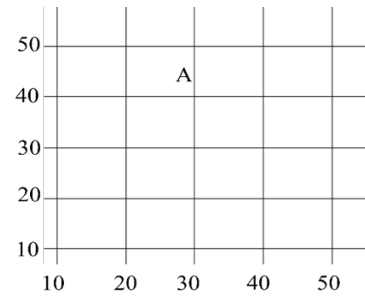
C 23<sup>rd</sup> September

**D 22<sup>nd</sup> December**

ii. A four-figure grid reference shows location of a feature on a map.

[1]

In which grid is the letter 'A' located in the figure below?




- A 2030
- B 3040
- C 2040
- D 4050

iii. The volume of a river usually increases towards its lower course due to

[1]

- A increase in the speed of a river.
- B increase in the load of a river.
- C **increase in the number of tributaries.**
- D decrease in the number of tributaries.

<p>iv. The soil has little space between the particles for air or water to pass through. It becomes sticky when it is wet and cracks when it is dry.</p> <p>Which soil is best described in the above statement?</p> <p>A Silt</p> <p><b>B Clay</b></p> <p>C Sand</p> <p>Loam</p>	
<p>v. Following are the statements regarding the composition of the atmosphere.</p> <p>I. The atmosphere is composed of gases only.</p> <p>II. The atmosphere is composed of 20.9% Oxygen.</p> <p>III. The composition of the atmosphere is different in different places.</p> <p>Which combination of statements are true?</p> <p>A I and II</p> <p><b>B II and III</b></p> <p>C I and III</p> <p>D I, II and III</p>	<b>[1]</b>
	<b>[1]</b>

<p>vi. Which of the following statements correctly distinguish between a hazard and a disaster?</p> <p>A A hazard causes minor damage, while a disaster causes severe damage.</p> <p>B A hazard is a human-made event, while a disaster is a natural phenomenon.</p> <p>C A hazard is a temporary disruption, while a disaster is a permanent alteration.</p> <p><input checked="" type="radio"/> <b>D A hazard has potential to cause harm, while a disaster causes significant damage.</b></p>		<b>[1]</b>
<p>vii. Study the picture and identify the settlement pattern depicted below:</p> <p>A Circular</p> <p>B Terraced</p> <p><input checked="" type="radio"/> <b>C Nucleated</b></p> <p>D Dispersed</p>		<b>[1]</b>
<p>viii. An environment consists of biotic and abiotic components. Which of the following alternatives show the combination of ‘<b>only</b>’ abiotic components of the ecosystem?</p> <p>A Air, Water, Plants, Land</p> <p>B Air, water, Animals, land</p> <p><input checked="" type="radio"/> <b>C Air, Water, Sunlight, Land</b></p> <p>D Air, Water, Sunlight, Animals</p>	<b>[1]</b>	

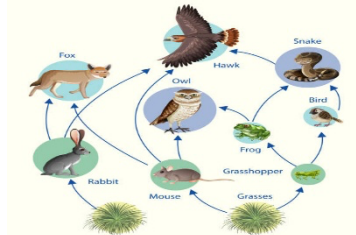
ix. This stage occurs during and immediately after a disaster. It involves mobilizing emergency services, conducting search and rescue operations, and setting up emergency shelters.

Which stage of the disaster management cycle is described above?

- A Response
- B Recovery
- C Mitigation
- D Preparedness

x. If a mouse is an example of a primary consumer, what is the trophic level of Frog and Fox in the food web?

- A Primary producer
- B Primary consumer
- C Secondary producer
- D Secondary consumer



[1]

### Question 2

**Direction:** Match each item in Column A against the most appropriate item in Column B. Write the correct LETTER in the space provided below.

[5]

## Marking Scheme

Criteria	Marks
Premises match correctly with responses	1
Premises match wrongly with responses	0
Leaves premises without matching to the responses	0
One premise match to more than one response	0

Column A		Column B	
i.	Accumulation of materials	A	Deposition
ii.	Removal of materials from the surface	B	Suspension
iii.	Picks up materials and carries along	C	Saltation
iv.	<b>Occurrence of weather phenomena</b>	D	Surface Creep
v.	<b>Reflects Radio waves back to earth</b>	E	Abrasion
		G	Erosion
		I	Deflation

<b>Answer</b>		<b>[1x5=5]</b>												
	<table border="1"> <thead> <tr> <th>Column A</th> <th>Column B</th> </tr> </thead> <tbody> <tr> <td>i.</td> <td>C</td> </tr> <tr> <td>ii.</td> <td>A</td> </tr> <tr> <td>iii.</td> <td>G</td> </tr> <tr> <td>iv.</td> <td>E</td> </tr> <tr> <td>v.</td> <td>B</td> </tr> </tbody> </table>	Column A	Column B	i.	C	ii.	A	iii.	G	iv.	E	v.	B	
Column A	Column B													
i.	C													
ii.	A													
iii.	G													
iv.	E													
v.	B													

<b>Question 3</b>	<b>[5]</b>
<b>Direction: Fill in the blanks with appropriate word/s.</b>	

<b>Marking Scheme</b>									
<table border="1"> <thead> <tr> <th>Criteria</th> <th>Marks</th> </tr> </thead> <tbody> <tr> <td>Correct answer</td> <td>1</td> </tr> <tr> <td>Wrong answer</td> <td>0</td> </tr> <tr> <td>Blank answer</td> <td>0</td> </tr> </tbody> </table>	Criteria	Marks	Correct answer	1	Wrong answer	0	Blank answer	0	
Criteria	Marks								
Correct answer	1								
Wrong answer	0								
Blank answer	0								

i. The settlement pattern where houses are built around the Lhakhang is an example of _____.	<b>[1]</b>
ii. The motion of the Earth that causes varying length of day and night is _____.	<b>[1]</b>
iii. Replacement level is the average number of children born per woman at which a population exactly replaces itself from one generation to the next, without migration. The minimum number of children required in each family to increase population is _____.	<b>[1]</b>

iv. The point directly beneath the epicenter where seismic waves originate is known as _____.	[1]												
v. A bear consuming both plants and flesh to get energy in an ecosystem is an example of _____.	[1]												
<b>Answers</b>	[1x5=5]												
i. <b>Circular pattern/Circle/Radial</b> ii. <b>Revolution</b> iii. <b>More than two/three and above</b> iv. <b>Focus/Hypocenter/Seismic Focus</b> v. <b>Omnivores</b>													
<b>Question 4</b>	[5]												
<b>Direction: Write True or False against each statement.</b>													
<b>Marking Scheme</b>													
<table border="1"> <thead> <tr> <th>Criteria</th> <th>Marks</th> </tr> </thead> <tbody> <tr> <td><b>Writes True (T) for correct statement and False (F) for wrong statement</b></td> <td><b>1</b></td> </tr> <tr> <td><b>Mark Tick for correct statement and Cross for false statement</b></td> <td><b>1</b></td> </tr> <tr> <td><b>Writes False for correct statement and True for wrong statement</b></td> <td><b>0</b></td> </tr> <tr> <td><b>Leaves blank against the statement</b></td> <td><b>0</b></td> </tr> <tr> <td><b>Writes both the alternate responses against one statement</b></td> <td><b>0</b></td> </tr> </tbody> </table>	Criteria	Marks	<b>Writes True (T) for correct statement and False (F) for wrong statement</b>	<b>1</b>	<b>Mark Tick for correct statement and Cross for false statement</b>	<b>1</b>	<b>Writes False for correct statement and True for wrong statement</b>	<b>0</b>	<b>Leaves blank against the statement</b>	<b>0</b>	<b>Writes both the alternate responses against one statement</b>	<b>0</b>	
Criteria	Marks												
<b>Writes True (T) for correct statement and False (F) for wrong statement</b>	<b>1</b>												
<b>Mark Tick for correct statement and Cross for false statement</b>	<b>1</b>												
<b>Writes False for correct statement and True for wrong statement</b>	<b>0</b>												
<b>Leaves blank against the statement</b>	<b>0</b>												
<b>Writes both the alternate responses against one statement</b>	<b>0</b>												
i. Tropical grassland has tall and thorny grasses while temperate grassland has short and soft grasses.	[1]												

ii. Inward bending of contours on the map indicates a valley on the earth surface.	[1]
iii. If Thrimshingla, located at an altitude of 3,780m experiences a mean temperature of 3 <sup>0</sup> C, then the mean temperature of Ura located at 3,285m will be 5 <sup>0</sup> C.	[1]
iv. People living in urban areas are usually engaged in manufacturing, business and services.	[1]
v. Map reading skills are important for farmers to understand the weather condition of a place for cultivation.	[1]
<b>Answers</b>	[1x5=5]
i. <b>True</b>	
ii. <b>True</b>	
iii. <b>False</b>	
iv. <b>True</b>	
v. <b>False</b>	
<b>SECTION B [45 MARKS]</b> ANSWER ALL QUESTIONS	
<b>Question 5</b>	[9]
a) “In less than a decade, Bhutan recorded a total of 1,403 forest fire incidents. The highest numbers of fire incidents were recorded in Thimphu with 104 incidents and Wangduephodrang recorded the highest areas burnt with 40,923 acres” (Kuensel, 11 Januray, 2020). What are the reasons that contribute to the high number of forest fire incidents in Bhutan? Write <b>TWO</b> reasons.	[2]

**Answer**

- Burning of agriculture debris
- Careless smokers
- Lightning
- Burning pasture land
- Roadside bitumen burning
- Burning of waste
- Picnickers/hikers/campers
- Spark due to electrical short circuit from power transmission lines in forests
- Deliberate action
- Lack of awareness
- Vehicle Accident
- Natural Causes like falling boulders during dry season
- Firing
- Blasting
- Fire crackers

<b>Criteria</b>	<b>Marks</b>
<b>Two correct responses</b>	<b>2</b>
<b>One correct response</b>	<b>1</b>
<b>Incorrect response</b>	<b>0</b>
<b>No response</b>	<b>0</b>

b. An employee of Bhutan Trust Fund for Environmental Conservation (BT FEC) has been assigned the responsibility of raising awareness about the significance of utilizing renewable resources. However, she lacks expertise in this area and seeks your support. Design a suitable poster that Pema can use to fulfill her assigned task.

**3**

**Answer**

**The text and visual in the poster should be based on following:**

- Reduce air pollution
- Afforestation and reforestation
- Use renewable energy (Solar, wind, water, biogas, geothermal)
- Economic growth
- Climate change mitigation
- Sustainable energy usage
- Decrease in import of fossil fuel
- Reduce environmental impacts
- Waste management (Reduce, recycle, reuse, refuse)

Abide by laws and policies

<b>Criteria</b>	<b>Marks</b>
<b>Visual message/ Text message with picture</b>	<b>2</b>
<b>Layout and organization of ideas</b>	<b>1</b>

c. Settlement is classified into two: Rural and Urban. If you are given a choice, where would you settle? Write **TWO** justifications.

**[2]**

**Answer**

**Students should justify based on the following points:**

**i. Urban Settlement**

- Better job opportunities
- Better economic opportunities
- Better infrastructural facilities
- Better education
- Better healthcare facilities
- Entertainment and recreational activities
- Better services such as banking, insurance, communication and transportation

**ii. Rural**

- Space to practice agriculture
- Lower cost of living
- Less pollution (air, noise)/ waste/ clean water/Fresh Air
- Community bonding
- Peace and quiet
- Less crime
- Organic products
- Availability Resources
- Cultural and tradition based

<b>Criteria</b>	<b>Marks</b>
<b>Two correct responses</b>	<b>2</b>
<b>One correct response</b>	<b>1</b>
<b>Incorrect response</b>	<b>0</b>
<b>No response</b>	<b>0</b>

d) The interaction between biotic and abiotic components support life on Earth. Justify the above statement by providing **TWO** reasons.

**[2]**

**Answer**

**Students need to justify based on the following points.**

- Photosynthesis (sunlight, water, air)
- Plants get nutrients from the soil
- Energy transfer (One trophic level to other-Primary to secondary consumers)
- Pollination (wind, insects and animals)
- Helps to balance ecosystem
- Provide habitat
- Produce oxygen

Criteria	Marks
Two correct responses	2
One correct response	1
Incorrect response	0
No response	0

**Question 6**

[9]

a) Observe the picture below and identify the landform.

[1]



**Answer**

- **Waterfall**

Criteria	Marks
Correct answer	1
Incorrect answer	0

b) A traveller, working in the United Arab Emirates (UAE) is on vacation in Bhutan. While returning, he has to travel  $30^{\circ}$  west of Bhutan, calculate the longitude of the UAE? [2]

**Answer**

- Longitude of Bhutan is  $90^{\circ}\text{E}$
- Pema has to cross  $30^{\circ}$  longitudes towards West of Bhutan
- Therefore,  $90^{\circ}\text{E} - 30^{\circ} = 60^{\circ}$
- The longitude of UAE is  $60^{\circ}\text{E}$

Criteria	Marks
Correct answer	2
Correct answer without direction	1.5
Incorrect answer	0

c) The map distance between Changzamto and Lungtenphu is 6 cm. If the RF of the map is 1:50,000, what will be the actual distance on the ground? [2]

**Answer**

- Map distance between Changzamto and Lungtenphu = 6 cm
- Given R.F. 1:50,000
- $6 \text{ cm} \times 50,000 = 300,000 \text{ cm} / 100,000 \text{ cm} = 3 \text{ kms}$

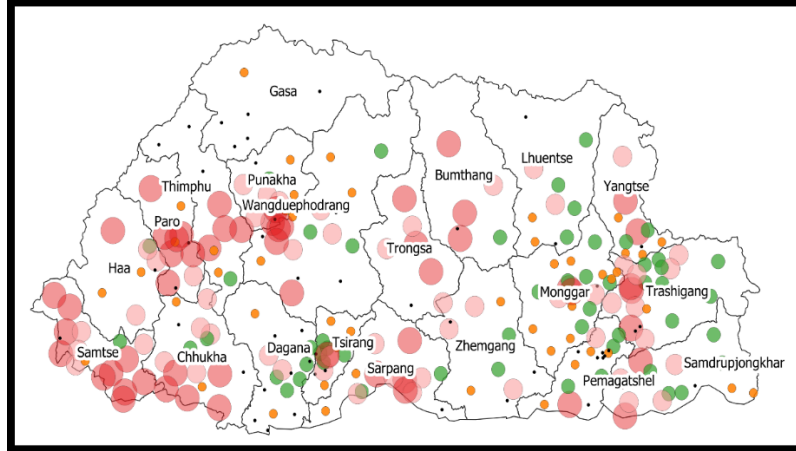
OR

$$50,000 / 100,000 = 0.5 \times 6 = 3 \text{ kms}$$

- The distance between Changzamto and Lungtenphu is 3kms

Criteria	Marks
Correct answer (Each step carries 0.5 marks)	2
Incorrect answer	0

d) As part of the assignment, Dorji used QGIS to create the population map shown below. As a Geography teacher, what feedback would you provide on the map he produced, considering the essential elements of a map [2]



**Answer**

**Feedback should be based on the five essential elements of a map**

- A title
- A key/legend
- North direction
- Scale
- Marginal information

<b>Criteria</b>	<b>Marks</b>
<b>Correct answer (If mentioned any 2 elements)</b>	<b>2</b>
<b>Correct answer (If mentioned any 1 elements)</b>	<b>1</b>
<b>Incorrect answer</b>	<b>0</b>

e) Higher birth rate and death rate is generally experienced by underdeveloped countries. Do you agree? Justify with **TWO** points.

**[2]**

**Answer**

**If YES**

- Limited access to healthcare
- Economic factors/labour
- Low literacy level
- Lack of family planning (family planning measures)
- Lack of proper Government policies
- Lack of education and awareness
- Beliefs
- Nutrition
- Health and sanitation

**If NO**

- Developmental initiative to enhance economic growth
- Advancement in healthcare
- External aid (countries, organizations-WHO)
- Initiated family planning program
- Education and empowerment
- Government policies

Criteria	Marks
Two correct responses	2
One response	1
Incorrect answer	0

**Question 7**

[9]

a) You are studying in a school which is located at  $25^{\circ}$  west. How many hours are you behind from your friend who is studying in a place located at  $65^{\circ}$  east? [2]

**Answer**

- Longitude difference=  $25^{\circ}\text{W} + 65^{\circ}\text{E} = 90^{\circ}$
- 1 hour =  $15^{\circ}$  OR  $1^{\circ} = 4$  minutes
- $90^{\circ}/15^{\circ} = 6$  hours OR  $90^{\circ} \times 4 \text{ minutes} = 360 \text{ minutes}/60 \text{ minutes} = 6$  hours
- 6 hours (behind)

Criteria	Marks
Correct answer with all steps	2
Incorrect answer with correct steps	1
Correct answer without steps	1
Only one step correct.	0.5
Incorrect answer	0

b) Cartographers cannot create a map without using a scale. State **TWO** importance of scale in cartography.

[1]

**Answer**

- To create accurate map
- To calculate distance between places
- To measure/calculate the area
- Navigation (use to determine distance between two places)
- Map comparison

Criteria	Marks
<b>TWO</b> importance of scale	1
<b>One</b> importance of scale	0.5
Incorrect answer	0

c) Suppose there are two Earths: one with an atmosphere and the other without atmosphere. Which Earth would you prefer to live on? Justify with **THREE** reasons. [3]

**Answer**

**Earth with Atmosphere**

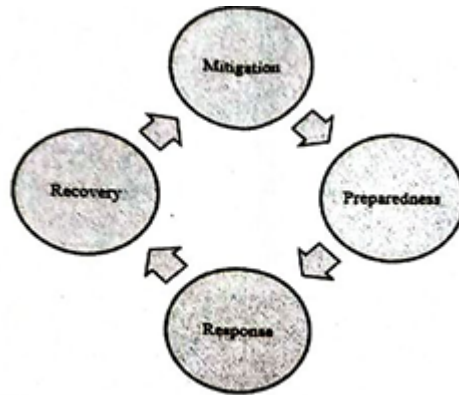
- Presence of atmosphere makes life possible
- Protect us from harmful rays of the sun
- It moderates climate of the earth
- Movement of water vapour (Water cycle)
- Protects us from meteors
- Reflects radio waves
- Different weather phenomena

**Earth without Atmosphere**

- Trap more sun's energy
- The weather is always same
- No weather-related disaster
- Easy space travel
- It won't be too cold during the day in winter.
- Better view of outer space

Criteria	Marks
<b>THREE correct responses</b>	<b>3</b>
<b>Two correct responses</b>	<b>2</b>
<b>One correct response</b>	<b>1</b>
<b>Incorrect answer</b>	<b>0</b>

d) Considering yourself as the head of Disaster Management Committee, prepare a disaster management plan to be used during the event of an earthquake as per the flow chart given below. **[3]**



**Answer**

**1.Preparedness**

- plan (earthquake disaster management plan)
- drills
- awareness
- training
- hazard hunting
- emergency contact number.

**2. Response**

- SAR
- First aid
- transportation
- temporary shed
- duck, cover and hold
- Siren/Warning

- head counting
- evacuation
- communication

**3. Recovery**

- restoration
- Financial aid
- counselling
- emergency supplies

**4. Mitigation**

- revisit plan
- hazard hunt
- installation of early warning system
- Earthquake resistant building

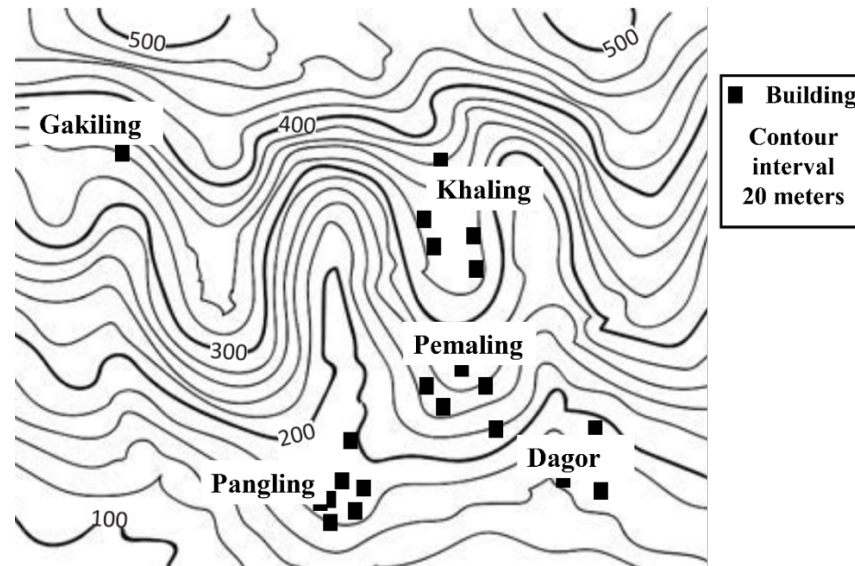
<table border="1"> <thead> <tr> <th>Criteria</th> <th>Marks</th> </tr> </thead> <tbody> <tr> <td>Correct plan for all the 4 phases</td> <td>3</td> </tr> <tr> <td>Correct plan for all the 3 phases</td> <td>2</td> </tr> <tr> <td>Correct plan for all the 2 phases</td> <td>1</td> </tr> <tr> <td>Correct plan for only 1 phase</td> <td>0.5</td> </tr> <tr> <td>Clearly mentioned the definition of four phases</td> <td>1</td> </tr> <tr> <td>Incorrect plan</td> <td>0</td> </tr> </tbody> </table>		Criteria	Marks	Correct plan for all the 4 phases	3	Correct plan for all the 3 phases	2	Correct plan for all the 2 phases	1	Correct plan for only 1 phase	0.5	Clearly mentioned the definition of four phases	1	Incorrect plan	0	
Criteria	Marks															
Correct plan for all the 4 phases	3															
Correct plan for all the 3 phases	2															
Correct plan for all the 2 phases	1															
Correct plan for only 1 phase	0.5															
Clearly mentioned the definition of four phases	1															
Incorrect plan	0															
<b>Question 8</b>		<b>[9]</b>														
a) Why does climate vary from place to place? Explain any <b>ONE</b> reason.		<b>[1]</b>														

**Answer****Need to explain any one factor in brief**

- Altitude
- Latitude
- Direction of mountain range
- Monsoon wind/seasonal wind
- Vegetation

<b>Criteria</b>	<b>Marks</b>
<b>Explain one factor</b>	<b>1</b>
<b>List only (more than) one factor</b>	<b>0.5</b>
<b>Incorrect answer</b>	<b>0</b>

b) Study the given map and answer the questions that follows.



i. If Dagor lies towards the South East of Pemaling, what is the direction of Khaling from Pangling?

[1]

**Answer**

- North East (NE)
- OR**
- North North East (NNE)

Criteria	Marks
Correct answer	1
Incorrect answer	0

ii. Find the altitude of a building located in Gakiling.

[1]

**Answer**

- 340 meters

Criteria	Marks
Correct answer	1
Answer without unit	0.5
Incorrect answer	0

c) People living in northern and southern regions of Bhutan have different tradition and culture. How do these differences shape their lifestyles and social practices?

[3]

**Answer**

- Different dialects/language
- Different food habits
- Festivals
- Agricultural practices/livestock
- Design of the houses
- Different dress
- Games

<b>Criteria</b>	<b>Marks</b>
<b>Three correct responses</b>	<b>3</b>
<b>Two correct responses</b>	<b>2</b>
<b>One correct response</b>	<b>1</b>
<b>Incorrect answer</b>	<b>0</b>

- d) Explain **THREE** measures that individuals and communities may adopt to conserve biodiversity, considering its significance in creating a healthy and sustainable future for all. **[3]**

**Answer**

- Use of alternative sources of energy
- Planting trees
- Water conservation
- Energy conservation
- 4 Rs (Recycle, reduce, reuse..... )
- Crop rotation
- Promote awareness
- Protect natural habitat
- Reduce use of fossil fuel
- Reduce use of plastics
- Monitor illegal hunting
- Rules and regulations

<b>Criteria</b>	<b>Marks</b>
<b>Three correct measures</b>	<b>3</b>
<b>Two correct measures</b>	<b>2</b>
<b>One Correct measure</b>	<b>1</b>
<b>Incorrect answer</b>	<b>0</b>

**Question 9****[9]**

a) Compare and contrast the lines of latitude and longitude with **ONE** point each.

[2]

Latitude	Longitude
-imaginary lines -measured the distances -measured in degrees -helps in locating places	

Answer

Differences	
Latitude	Longitude
Parallel/horizontal lines are called latitude	Vertical lines are called longitude
Equator is the starting point	Prime meridian is the starting point
180 <sup>0</sup> s of latitude	360 <sup>0</sup> s of longitude
Helps to know climate	Helps determine time
Measures the distance of places north or south of equator	Measures the distance of places east or west of prime meridian

Criteria	Marks
One correct similarity	1
One correct difference	1
Incorrect answer	0

b) Rivers are responsible for the formation and reshaping of different landforms on the surface of the Earth. Explain any **TWO** processes which results in the formation and modification of landforms. [2]

**Answer**

**Students need to describe any TWO processes responsible for the formation and modification of land based on the works of a river**

- **Erosion:** Rivers erode land by wearing away soil, rocks, and materials, creating channels and valleys.
  - Vertical erosion and lateral erosion
  - Valleys/spurs /hills/waterfall/gorges
- **Transportation:** Rivers carry eroded materials downstream, transporting sediment like gravel, sand, silt, and clay. These transported materials shape the riverbed and contribute to the formation of new landforms downstream. Broad valleys/meander/alluvial cone/U-shaped valleys
- **Deposition:** As a river's velocity decreases, it deposits sediment it has carried, forming landforms like river deltas, floodplains, alluvial fans, oxbow lake and levees when reaching flatter or wider areas.

<b>Criteria</b>	<b>Marks</b>
<b>Explain any two processes</b>	<b>2</b>
<b>Explain any one process</b>	<b>1</b>
<b>Mentioned only two processes without explanation</b>	<b>1</b>
<b>Incorrect answer</b>	<b>0</b>

c) Describe a journey of a river from its source to the Mouth.

[3]

**Answer**

**Students may include: Stages of a river, characteristics of a river in different stages, different landforms in different stages, settlement along the rivers, work of a rivers**

- 1. 1<sup>st</sup> stage/youthful/upper**
- 2. 2<sup>nd</sup> stage/mature/middle**
- 3. 3<sup>rd</sup> stage/old/lower**

Criteria	Marks
Describe all the stages	3
Describe only TWO stages	2
Mentioned only stages without description	1
Incorrect answer	0

d) Human activities are responsible for the increase in carbon dioxide in the atmosphere. What are some of the activities that increase the amount of carbon dioxide in the atmosphere? [2]

**Answer**

- Burning of fossil fuel
- Deforestation
- Burning plastics/waste
- Forest fire
- Pollution from industries
- Agriculture practices
- Construction of infrastructural facilities
- Vehicles emission

Criteria	Marks
Two correct responses	2
One correct response	1
Incorrect answer	0

**SECTION C [10 MARKS]**  
ATTEMP ALL QUESTION

**Question 10**

**[10]**

**a) Direction: In the outline map of Bhutan given below:**

**[6]**

Criteria	Marks
Correct location with correct Symbol/name	1
Unclear word/spelling	0
Incorrect location with correct name	0
Incorrect location with incorrect name	0

i. Mark with (—) and name the rivers that flow through

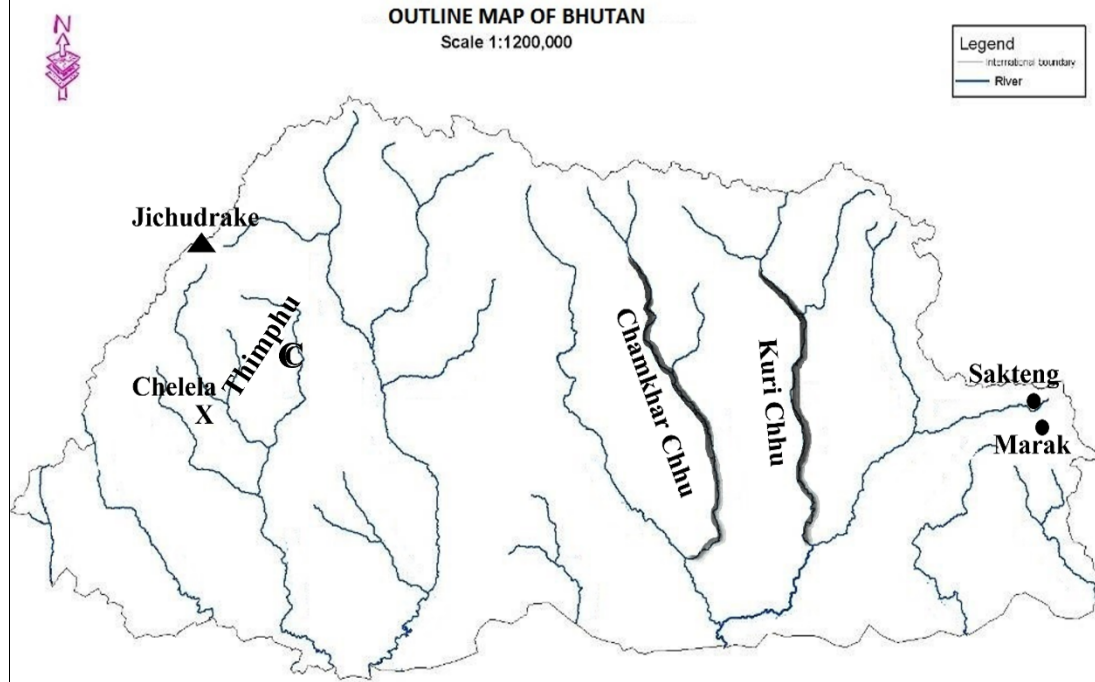
**[2]**

- a. Bumthang
- b. Lhuentse.

ii. Imagine that you are travelling from Paro to Haa, on the way, you have to cross one important pass ( <i>La</i> ). Mark with (X) and name the pass.	[1]
iii. Mark with (C) and name capital of Bhutan.	[1]
iv. Mark with▲ ( ) and name mountain Jichudrake.	[1]
v. Mark with● ( ) and name the place where there is least population according to PHCB-2017 In Bhutan.	[1]

**Answer**

For sub question a (vi), students can choose either Sakteng or Merak



**b) In the outline map of Asia given below:**

**[4]**

Criteria	Marks
Correct location with symbol/name	0.5
Incorrect location	0

i. Mark with ( ▲ ) and name mountain Caucasus and Khingan.	[1]
ii. Mark with ( — ) and name river Indus and Yangtze.	[1]
iii. Shade ( // ) and name Caspian Sea and Yellow Sea.	[1]
iv. Mark with ( ● ) and name Bhutan and Indonesia.	[1]

**Answer**

